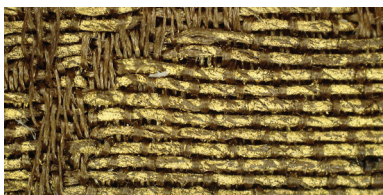
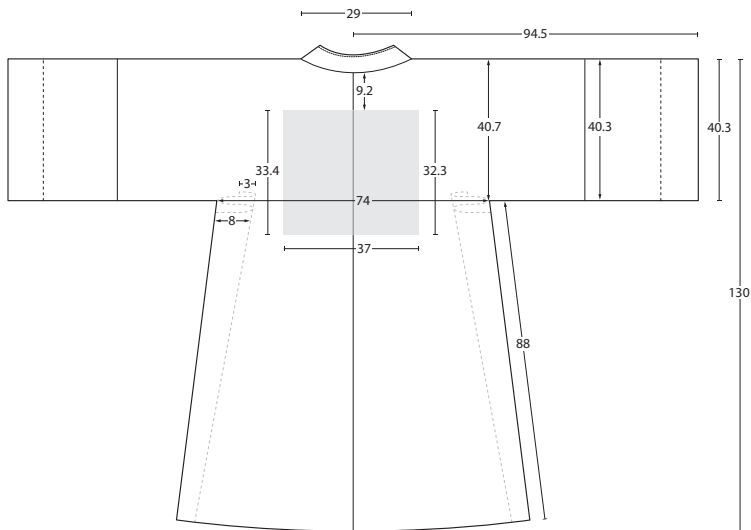
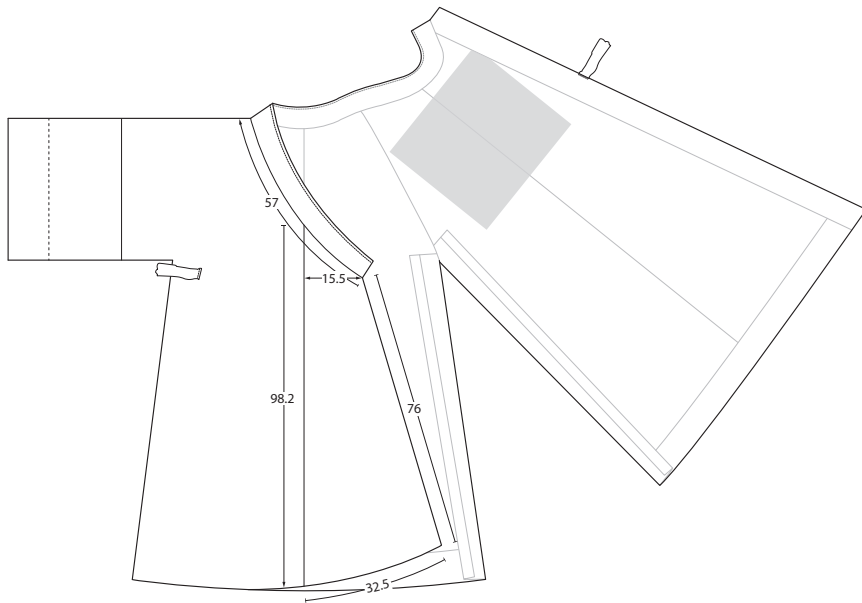
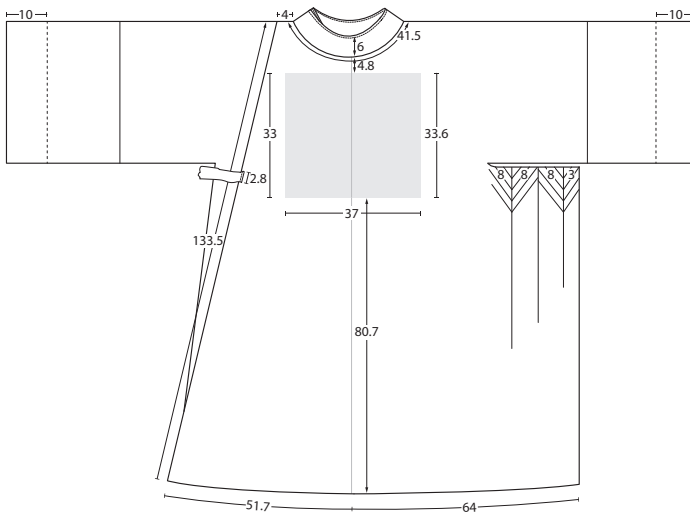




옆자락 무



수구접음선



흥배 | 직금단



갈감 | 문단

단령형원삼 12937

구성	홀
소재	문단·직금단
염습상태	습
뒷길이	130(125+5)
화장	94.5(63.5+31)
뒤폭	74
진동	40.7
수구	40.3

대대 12938

구성	겹
소재	단
염습상태	습
길이	220
너비	4.5